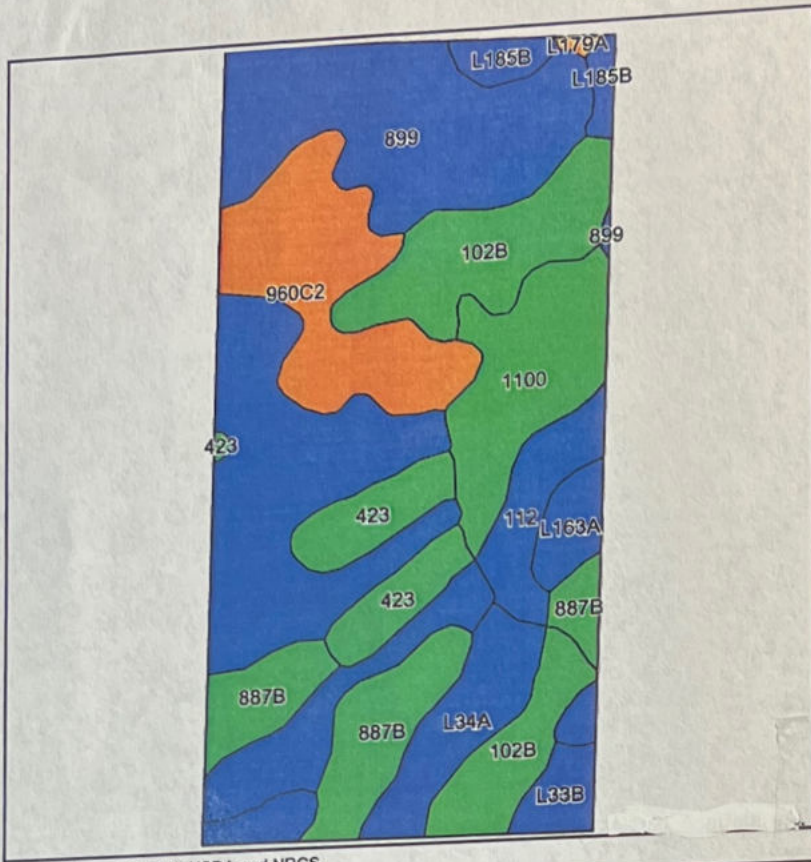


Soils Map



State: **Minnesota**
 County: **Meeker**
 Location: **28-118N-32W**
 Township: **Danielson**
 Acres: **80.03**
 Date: **6/1/2022**



Soils data provided by USDA and NRCS.

Area Symbol: MN093, Soil Area Version: 15

Code	Soil Description	Acres	Percent of field	PI Legend	Non-Irr Class *c	Productivity Index	Bromegrass alfalfa AUM	Bromegrass alfalfa hay Tons	Corn Bu	Oats Bu	Reed canarygrass AUM	Soybeans Bu	Spring wheat Bu
899	Harps-Okoboji complex, 0 to 2 percent slopes	29.17	36.4%	[Blue]	llw	89							
102B	Clarion loam, 2 to 6 percent slopes	9.72	12.1%	[Green]	lle	95							
960C2	Storden-Omsrud complex, 6 to 12 percent slopes, eroded	9.17	11.5%	[Orange]	llle	78	4.5	3.8	143	73		43	44
887B	Clarion-Swanlake complex, 2 to 6 percent slopes	7.35	9.2%	[Green]	lle	92							
1100	Nicollet silty clay loam, 1 to 3 percent slopes	6.72	8.4%	[Green]	l	100	5.9	4.5	183	89		55	53
L34A	Cosmos silty clay, 0 to 2 percent slopes	5.54	6.9%	[Blue]	llw	81	4.9	3.2	148		5.5	45	49
423	Seaforth loam, 1 to 3 percent slopes	4.68	5.8%	[Green]	lls	95							
112	Harps clay loam, 0 to 2 percent slopes	3.04	3.8%	[Blue]	llw	90							
L185B	Strout-Arkton complex, 2 to 6 percent slopes	1.56	1.9%	[Blue]	lle	83	5.1	4	152			46	49
L163A	Okoboji silty clay loam, 0 to 1 percent slopes	1.53	1.9%	[Blue]	lllw	86							